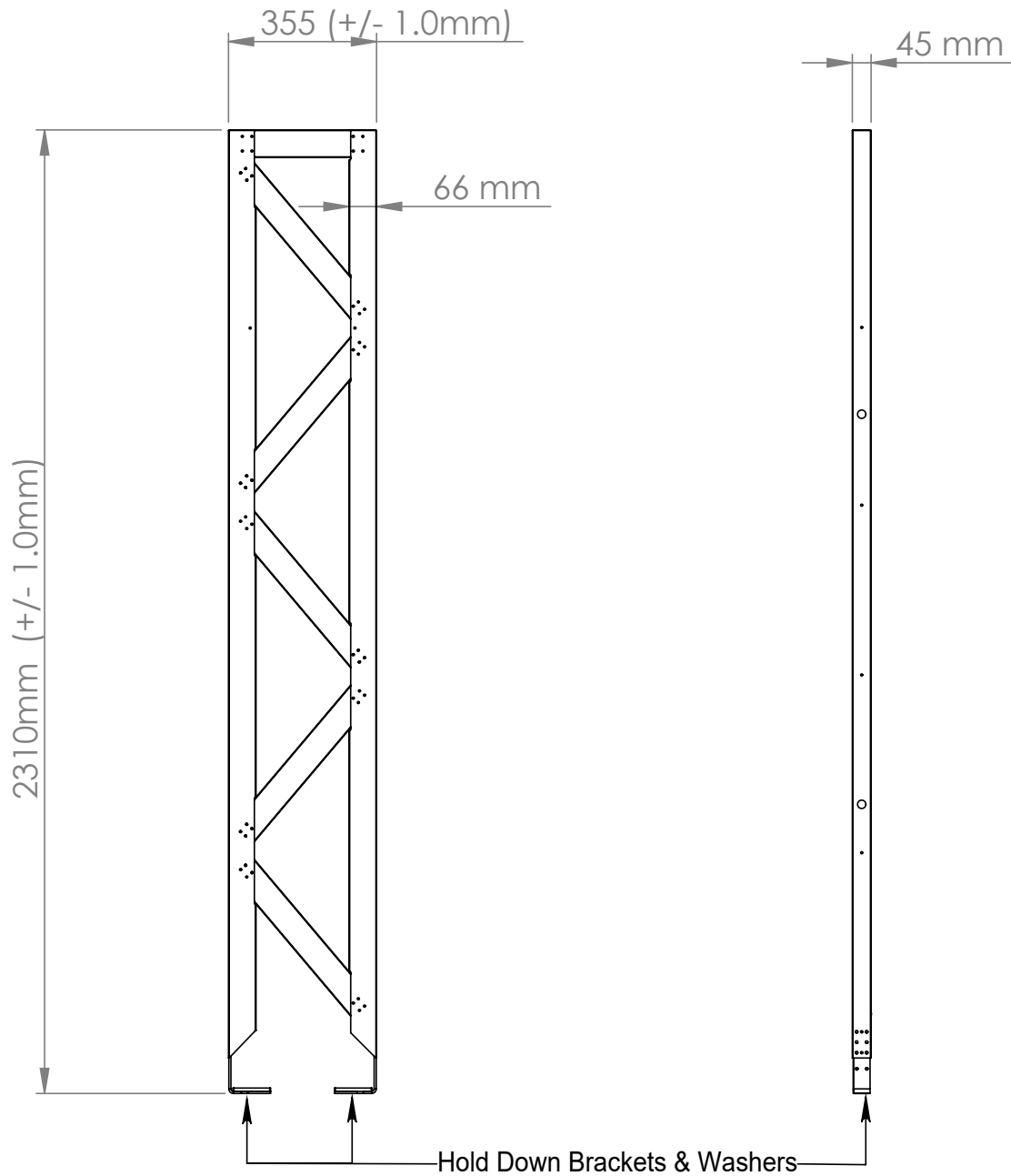


Gamma Bracing Frame GBF400

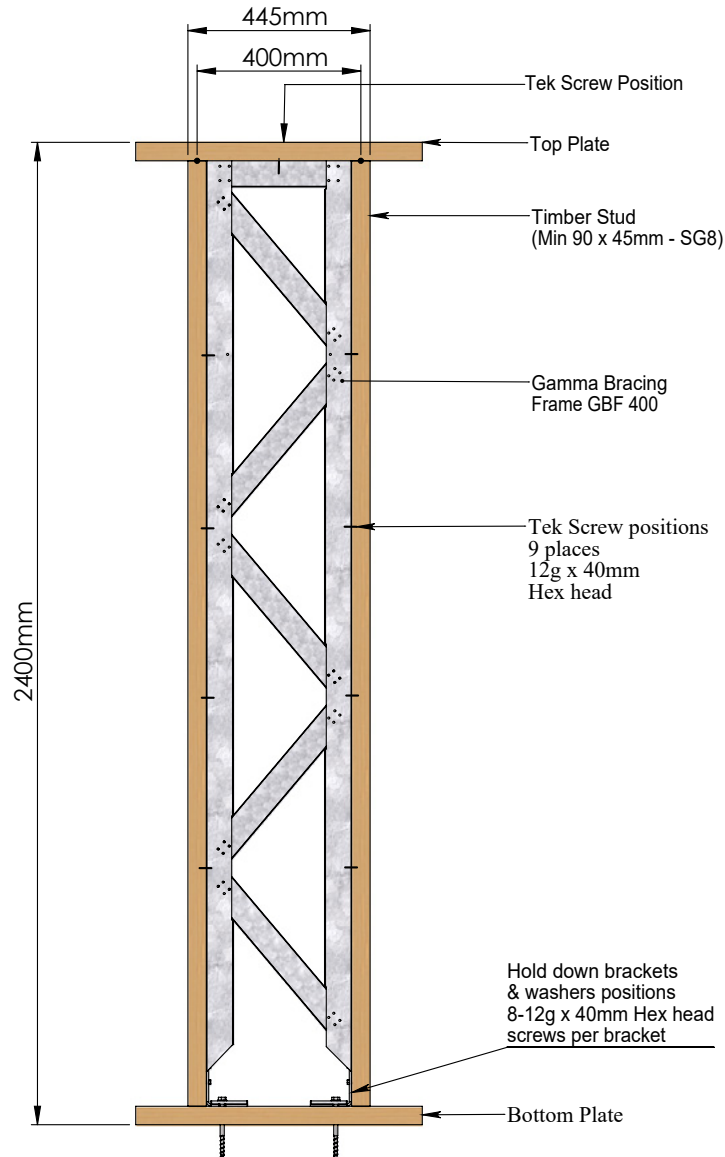


Detailed in the drawing below is the GBF400 as it is supplied, along with the GBF hold-down brackets, GBF washers, and Tek Screws. Timber framing and hold-down bolts are not supplied.



Detailed in the drawing below is the GBF400 as it must be constructed within the timber framing to provide the described wind and earthquake performance values.

Performance - Wind 45BU - Earthquake 55BU



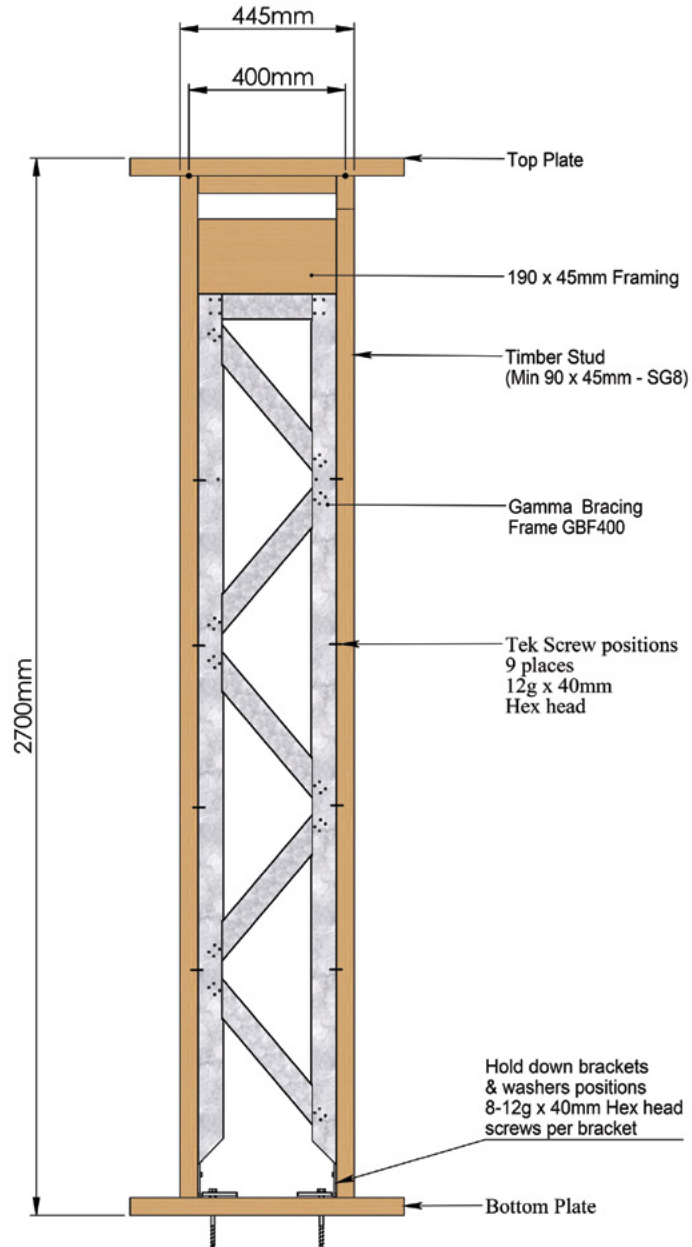
SPECIFICATIONS	
SYSTEM REF	GBF400/2.4
WIND BUs	45
EARTHQUAKE BUs	55
WALL HEIGHT (m)	2.4
WALL LENGTH (m)	0.445

GBF 400/2.4 COMPONENTS LIST	
QTY	COMPONENT
1	GBF 400 FRAME
2	GBF HOLD DOWN BRACKETS
2	GBF HOLD DOWN WASHERS
25	12g X 40mm TEK SCREWS
TIMBER FRAMING MIN OF 90 x 45mm SG8 (BY OTHERS)	

Detailed in the drawing below is the GBF400 as it must be constructed within the timber framing to provide the described wind and earthquake performance values.

Performance - Wind 40BU - Earthquake 47BU

GBF 400/2.7

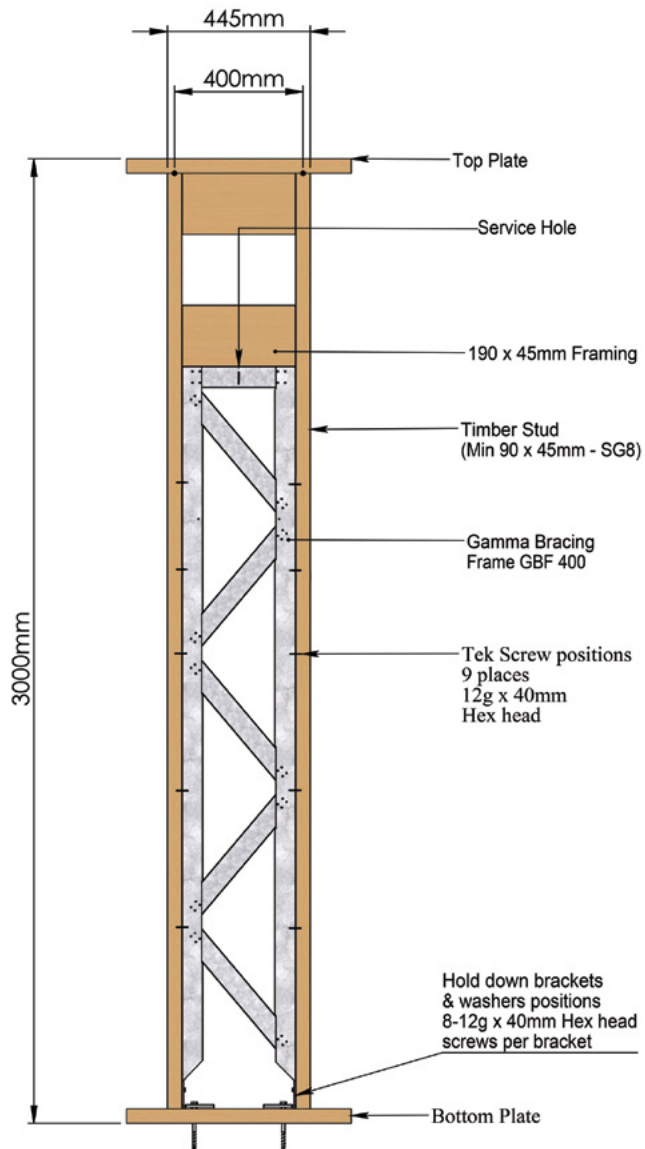


SPECIFICATIONS	
SYSTEM REF	GBF400/2.7
WIND BUs	40
EARTHQUAKE BUs	47
WALL HEIGHT (m)	2.7
WALL LENGTH (m)	0.4

GBF 400/2.7 COMPONENTS LIST	
QTY	COMPONENT
1	GBF 400 FRAME
2	GBF HOLD DOWN BRACKETS
2	GBF HOLD DOWN WASHERS
25	12g X 40mm TEK SCREWS
TIMBER FRAMING MIN OF 90 x 45mm SG8 (BY OTHERS)	

Detailed in the drawing below is the GBF400 as it must be constructed within the timber framing to provide the described wind and earthquake performance values.

Performance - Wind 35BU - Earthquake 44BU

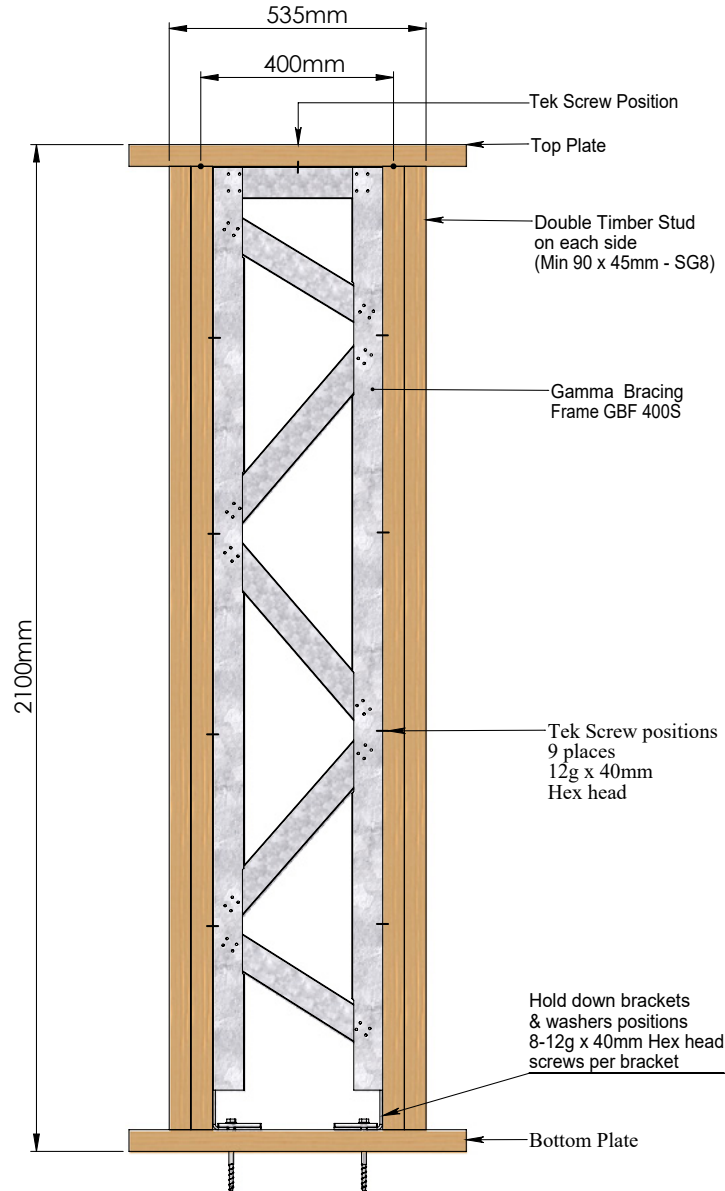


SPECIFICATIONS	
SYSTEM REF	GBF400/3.0
WIND BUs	35
EARTHQUAKE BUs	44
WALL HEIGHT (m)	3.0
WALL LENGTH (m)	0.445

GBF 400/3.0 COMPONENTS LIST	
QTY	COMPONENT
1	GBF 400 FRAME
2	GBF HOLD DOWN BRACKETS
2	GBF HOLD DOWN WASHERS
25	12g X 40mm TEK SCREWS
TIMBER FRAMING MIN OF 90 x 45mm SG8 (BY OTHERS)	

Detailed in the drawing below is the GBF535S as it must be constructed within the timber framing to provide the described wind and earthquake performance values.

Performance - Wind 69BU - Earthquake 75BU

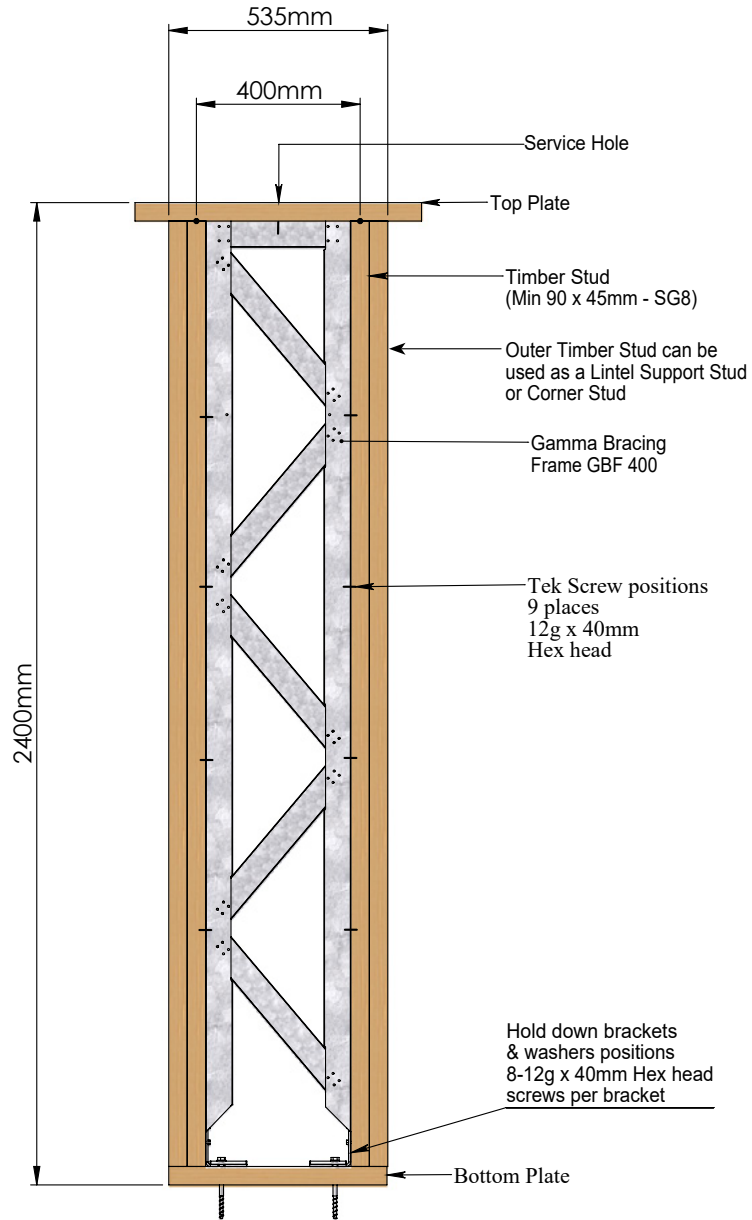


SPECIFICATIONS	
SYSTEM REF	GBF535S
WIND BUs	69
EARTHQUAKE BUs	75
WALL HEIGHT (m)	2.1
WALL LENGTH (m)	0.535

GBF 535S COMPONENTS LIST	
QTY	COMPONENT
1	GBF 400S FRAME
2	GBF HOLD DOWN BRACKETS
2	GBF HOLD DOWN WASHERS
25	12g X 40mm TEK SCREWS
TIMBER FRAMING MIN OF 90 x 45mm SG8 (BY OTHERS)	

Detailed in the drawing below is the GBF535 as it must be constructed within the timber framing to provide the described wind and earthquake performance values.

Performance - Wind 69BU - Earthquake 75BU

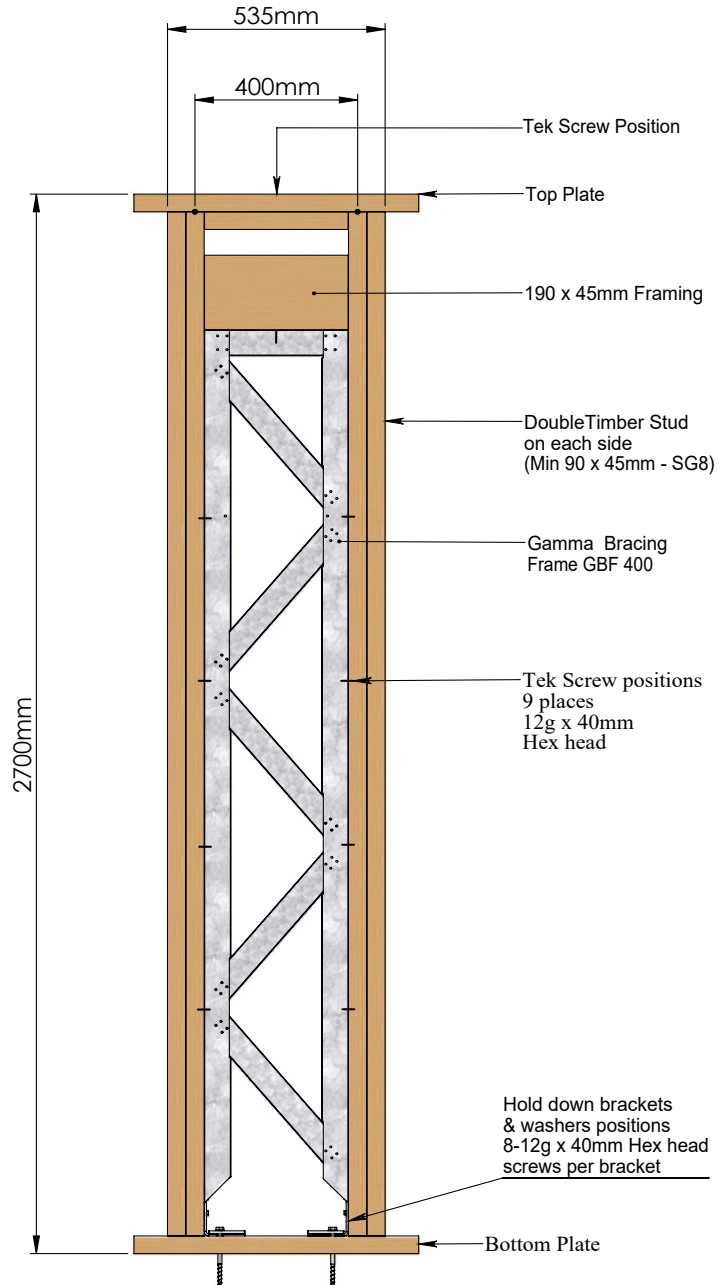


SPECIFICATIONS	
SYSTEM REF	GBF535/2.4
WIND BUs	69
EARTHQUAKE BUs	75
WALL HEIGHT (m)	2.4
WALL LENGTH (m)	0.535

GBF 535/2.4 COMPONENTS LIST	
QTY	COMPONENT
1	GBF 400 FRAME
2	GBF HOLD DOWN BRACKETS
2	GBF HOLD DOWN WASHERS
25	12g X 40mm TEK SCREWS
TIMBER FRAMING MIN OF 90 x 45mm SG8 (BY OTHERS)	

Detailed in the drawing below is the GBF535 as it must be constructed within the timber framing to provide the described wind and earthquake performance values.

Performance - Wind 61BU - Earthquake 67BU

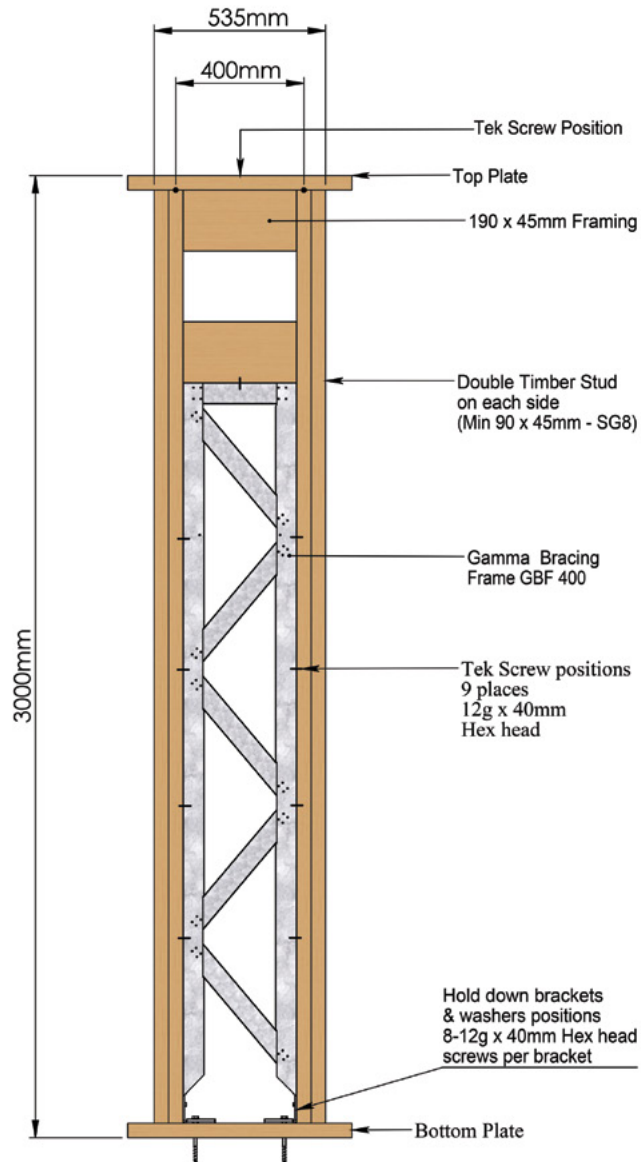


SPECIFICATIONS	
SYSTEM REF	GBF535/2.7
WIND BUs	61
EARTHQUAKE BUs	67
WALL HEIGHT (m)	2.7
WALL LENGTH (m)	0.4

GBF 535/2.7 COMPONENTS LIST	
QTY	COMPONENT
1	GBF 400 FRAME
2	GBF HOLD DOWN BRACKETS
2	GBF HOLD DOWN WASHERS
25	12g X 40mm TEK SCREWS
TIMBER FRAMING MIN OF 90 x 45mm SG8 (BY OTHERS)	

Detailed in the drawing below is the GBF535 as it must be constructed within the timber framing to provide the described wind and earthquake performance values.

Performance - Wind 55BU - Earthquake 60BU



SPECIFICATIONS

SYSTEM REF	GBF535/3.0
WIND BUs	55
EARTHQUAKE BUs	60
WALL HEIGHT (m)	3.0
WALL LENGTH (m)	0.535

GBF 535/3.0 COMPONENTS LIST

QTY	COMPONENT
1	GBF 400 FRAME
2	GBF HOLD DOWN BRACKETS
2	GBF HOLD DOWN WASHERS
25	12g X 40mm TEK SCREWS
TIMBER FRAMING MIN OF 90 x 45mm SG8 (BY OTHERS)	