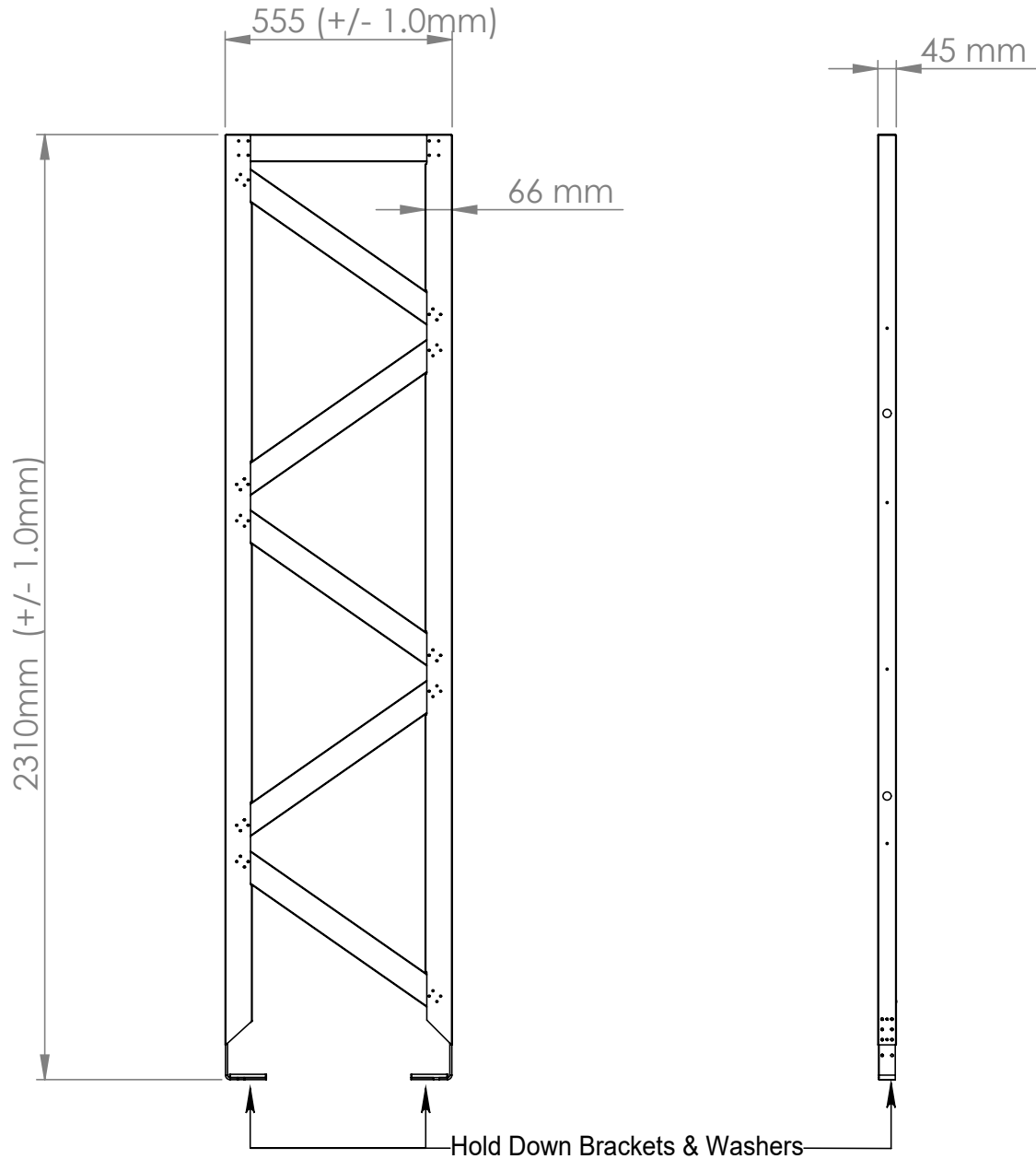


Gamma Bracing Frame GBF600/2.4

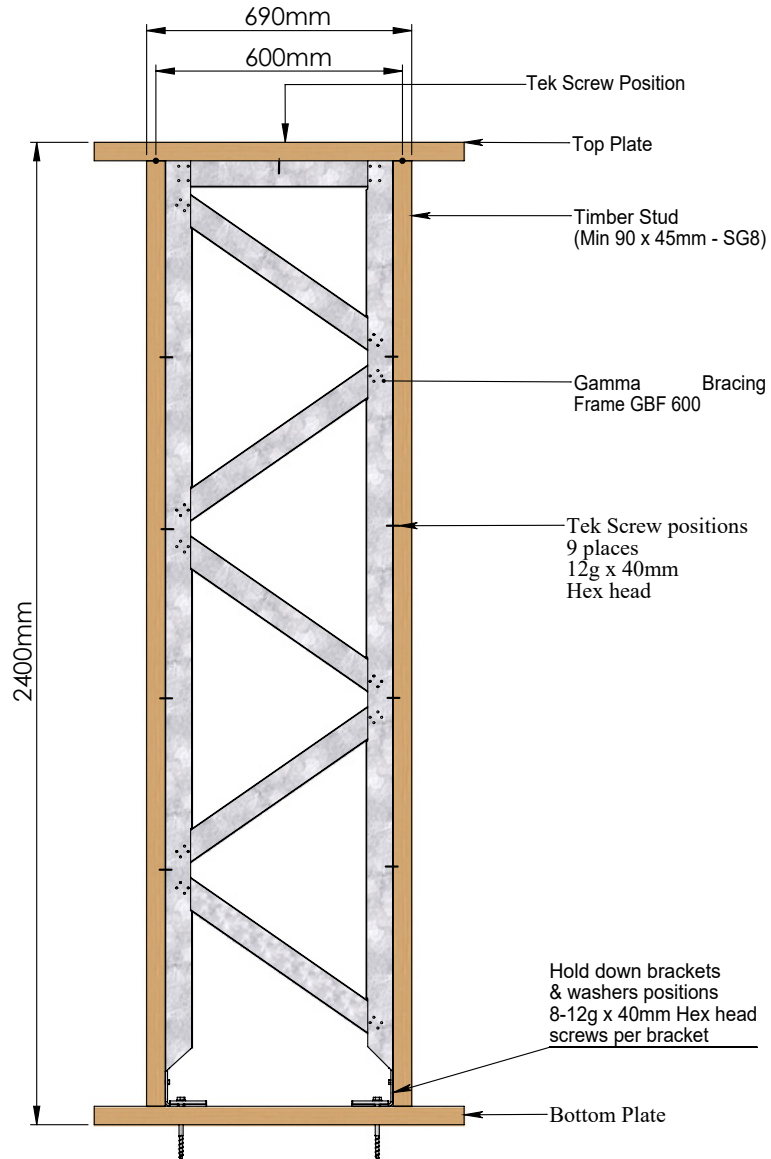


Detailed in the drawing below is the GBF600 as it is supplied, along with the GBF hold-down brackets, GBF Washers and TEK Screws. Timber framing and hold-down bolts are not supplied.



Detailed in the drawing below is the GBF600 as it must be constructed within the timber framing to provide the described wind and earthquake performance values.

Performance - Wind 84BU - Earthquake 90BU

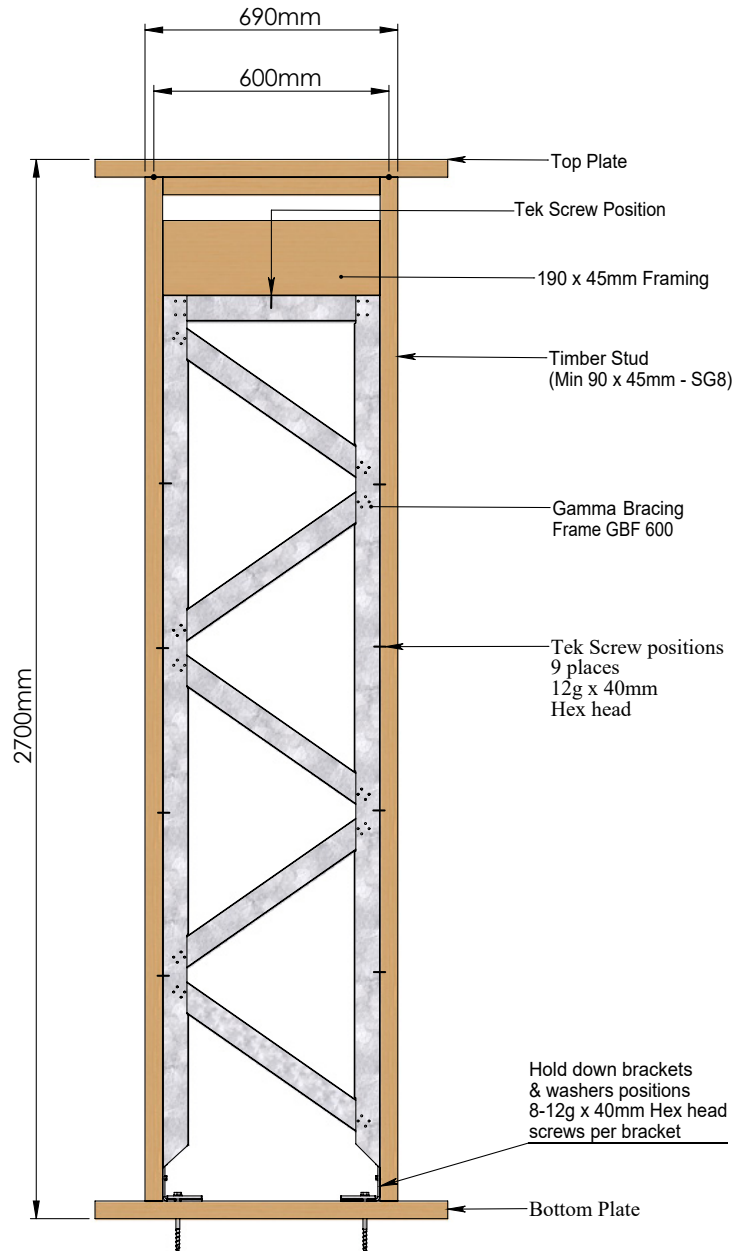


SPECIFICATIONS	
SYSTEM REF	GBF600/2.4
WIND BUs	84
EARTHQUAKE BUs	90
WALL HEIGHT (m)	2.4
WALL LENGTH (m)	0.690

GBF 600/2.4 COMPONENTS LIST	
QTY	COMPONENT
1	GBF 600 FRAME
2	GBF HOLD DOWN BRACKETS
2	GBF HOLD DOWN WASHERS
25	12g X 40mm TEK SCREWS
TIMBER FRAMING MIN OF 90 x 45mm SG8 (BY OTHERS)	

Detailed in the drawing below is the GBF600 as it must be constructed within the timber framing to provide the described wind and earthquake performance values.

Performance - Wind 70BU - Earthquake 70BU

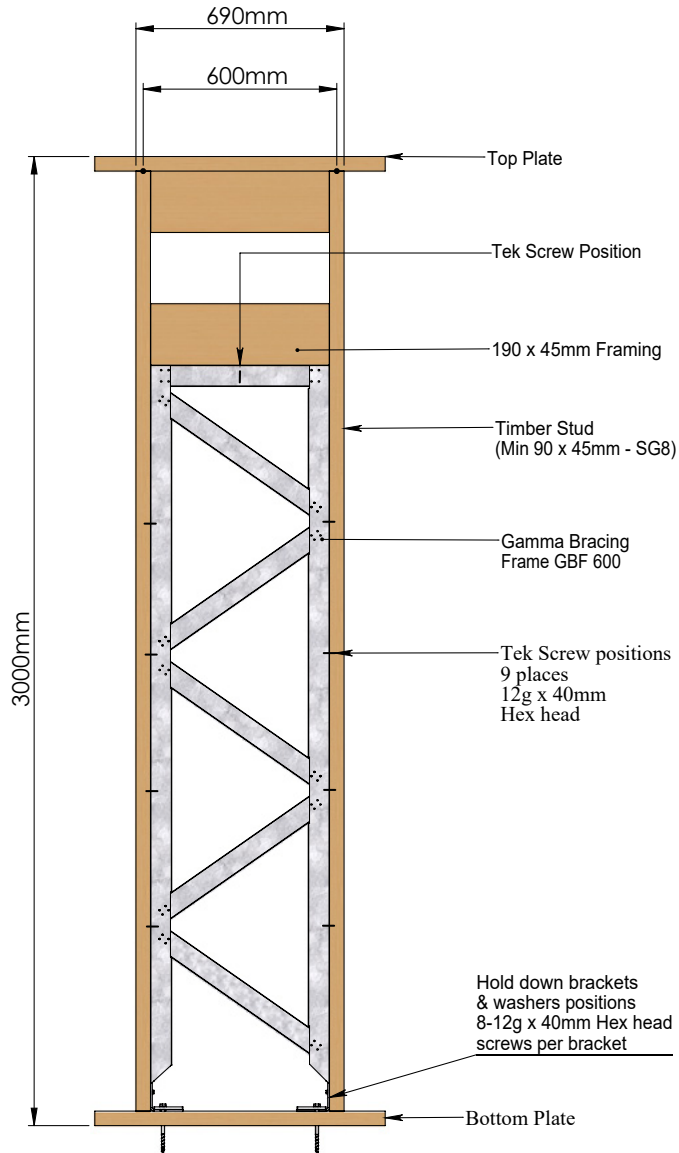


SPECIFICATIONS	
SYSTEM REF	GBF600/2.7
WIND BUs	70
EARTHQUAKE BUs	70
WALL HEIGHT (m)	2.7
WALL LENGTH (m)	0.690

GBF 600/2.7 COMPONENTS LIST	
QTY	COMPONENT
1	GBF 600 FRAME
2	GBF HOLD DOWN BRACKETS
2	GBF HOLD DOWN WASHERS
25	12g X 40mm TEK SCREWS
TIMBER FRAMING MIN OF 90 x 45mm SG8 (BY OTHERS)	

Detailed in the drawing below is the GBF600 as it must be constructed within the timber framing to provide the described wind and earthquake performance values.

Performance - Wind 55BU - Earthquake 60BU



SPECIFICATIONS	
SYSTEM REF	GBF600/3.0
WIND BUs	55
EARTHQUAKE BUs	60
WALL HEIGHT (m)	3.0
WALL LENGTH (m)	0.690

GBF 600/3.0 COMPONENTS LIST	
QTY	COMPONENT
1	GBF 600 FRAME
2	GBF HOLD DOWN BRACKETS
2	GBF HOLD DOWN WASHERS
25	12g X 40mm TEK SCREWS
TIMBER FRAMING MIN OF 90 x 45mm SG8 (BY OTHERS)	